

SPI Activities in Korea

A horizontal blue line spans the width of the slide. On the left side, a blue semi-circle is positioned above the line. On the right side, two blue semi-circles are positioned above the line, and one blue semi-circle is positioned below the line.

Hyuk-Soo Han

Korea Software Institute

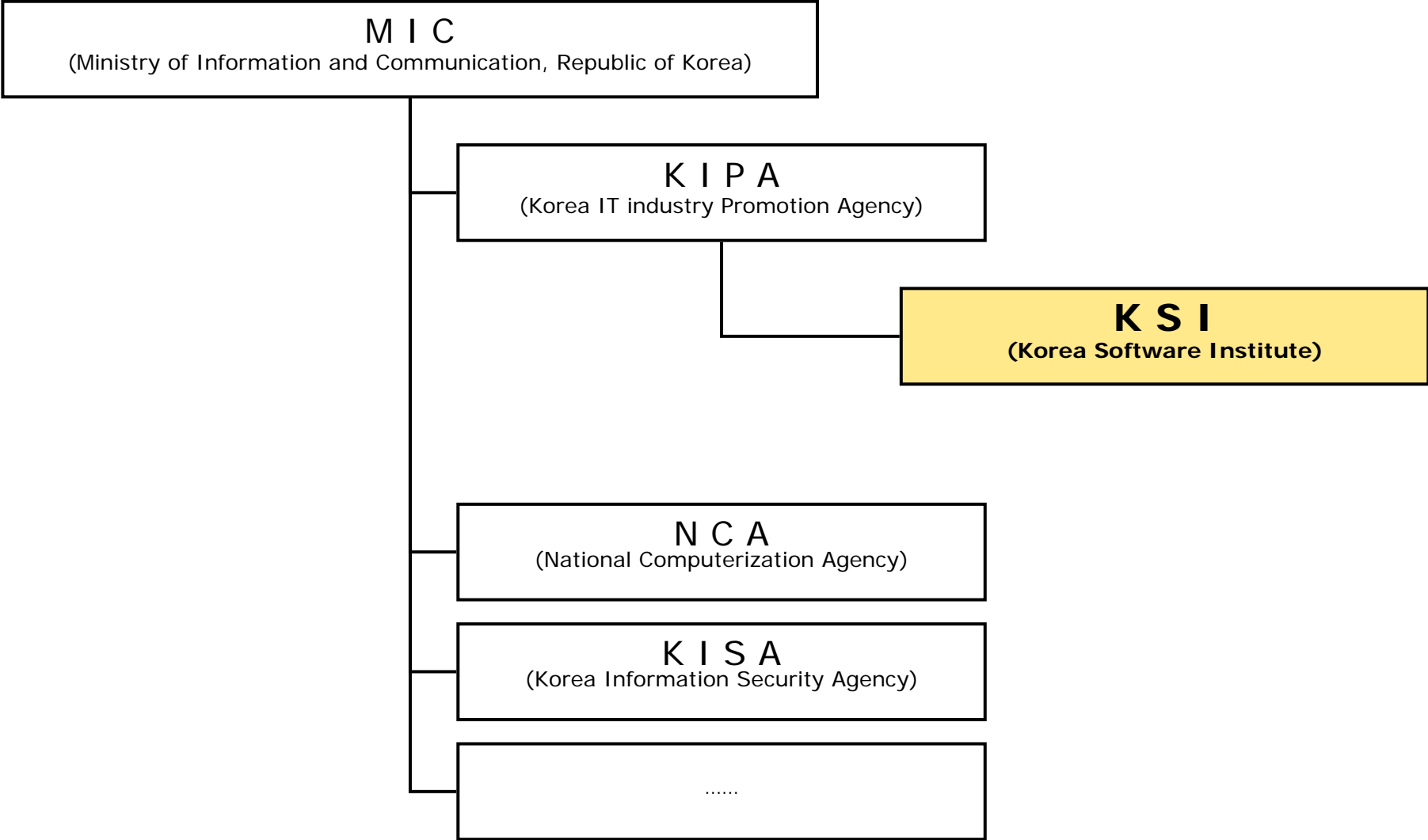
Contents

- ❑ Korea Software Institute (KSI)
 - Structure
 - Introduction and Role
 - Activities

- ❑ Status of SPI Activity in Korea
 - 2000 ~ 2003 CMM Levels of Companies
 - Number of Lead Assessors

- ❑ Korea Software Process Improvement Network (K-SPIN)
 - 4 Interest Groups
 - Korea SEPG
 - CMM for CEO

Korea Software Institute

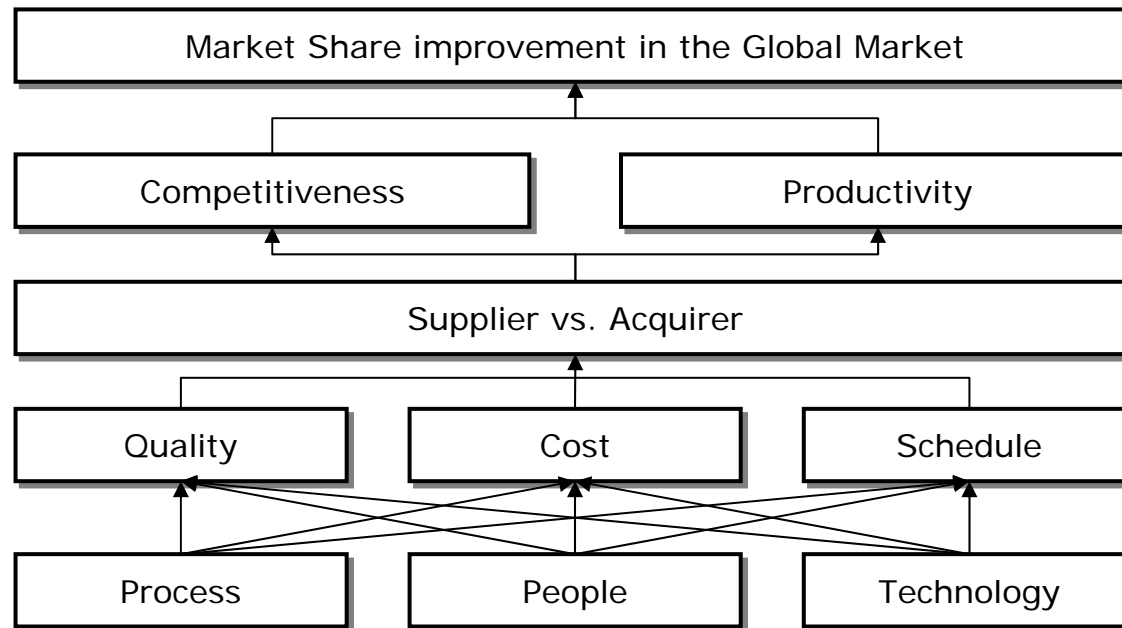


Introduction and Role

Introduction

- The KSI is a federally funded research and development center sponsored by MIC
- The KSI was established in March 2002

Role



Activities

Process	Nationwide SEPG
	<ul style="list-style-type: none">❑ SPI activity based on CMM❑ SPI Data gathering & Analysis❑ Best Practices
Technology	New Technology Transfer
	<ul style="list-style-type: none">❑ Benchmarking❑ Best Practices
People	Specialist in Technical Fields
	<ul style="list-style-type: none">❑ CMM Lead Assessor❑ Software Architect❑ Requirement Analyst, Tester, etc

Contents

- ❑ Korea Software Institute (KSI)
 - Structure
 - Introduction and role
 - Activities

- ❑ Status of SPI Activity in Korea
 - 2000 ~ 2003 CMM Levels of Companies
 - Number of Lead Assessors

- ❑ Korea Software Process Improvement Network (K-SPIN)
 - 4 Interest Groups
 - Korea SEPG
 - CMM for CEO

2000 ~ 2003 CMM Levels of companies (1/2)

- ❑ Appraisals conducted from 2000 through July 2003
 - 15 companies

 - Certification of CMM the first time in Korea, CMM Level 3
 - Posdata / 2001-11-12
 - The first time in Securities industry, CMM Level 2
 - Korea Securities Computer / 2002-11-15
 - The first time for Company wide, CMM Level 4
 - Posdata / 2002-12-01
 - The first time among Stock Market Worldwide, CMM Level 3
 - THE KOSDAQ STOCK MARKET INC. / 2002-12-06
 - The first time among Financial market in Korea, CMM Level 2 company wide
 - Korea First Bank (KFB) IT Office / 2003-01-20
 - The first time of CMM level 5 in Korea
 - Samsung SDS / 2002-11-23

2000 ~ 2003 CMM Levels of Companies (2/2)

- ❑ Level 5
 - 1 division of Samsung SDS
 - 1 division LG CNS
- ❑ Level 4
 - 1 Company-wide, Posdata
- ❑ Level 3
 - Samsung SDS, LG CNS, HIT, SICC, etc.
 - SK C&C, HandySoft, etc.
- ❑ Level 2
 - Korea First Data System
 - LG Electronics, Korea First Bank, and Korea Securities Computer KOSCOM

- ❑ 20 new organizations or projects are going to improve and appraise software process based on CMM or CMMI

Contents

- ❑ Korea Software Institute (KSI)
 - Structure
 - Introduction and role
 - Activities

- ❑ Status of SPI Activity in Korea
 - 2000 ~ 2003 CMM Levels of Companies
 - Number of Lead Assessors

- ❑ Korea Software Process Improvement Network (K-SPIN)
 - 4 Interest Groups
 - Korea SEPG
 - CMM for CEO

Korea SPIN (1/2)

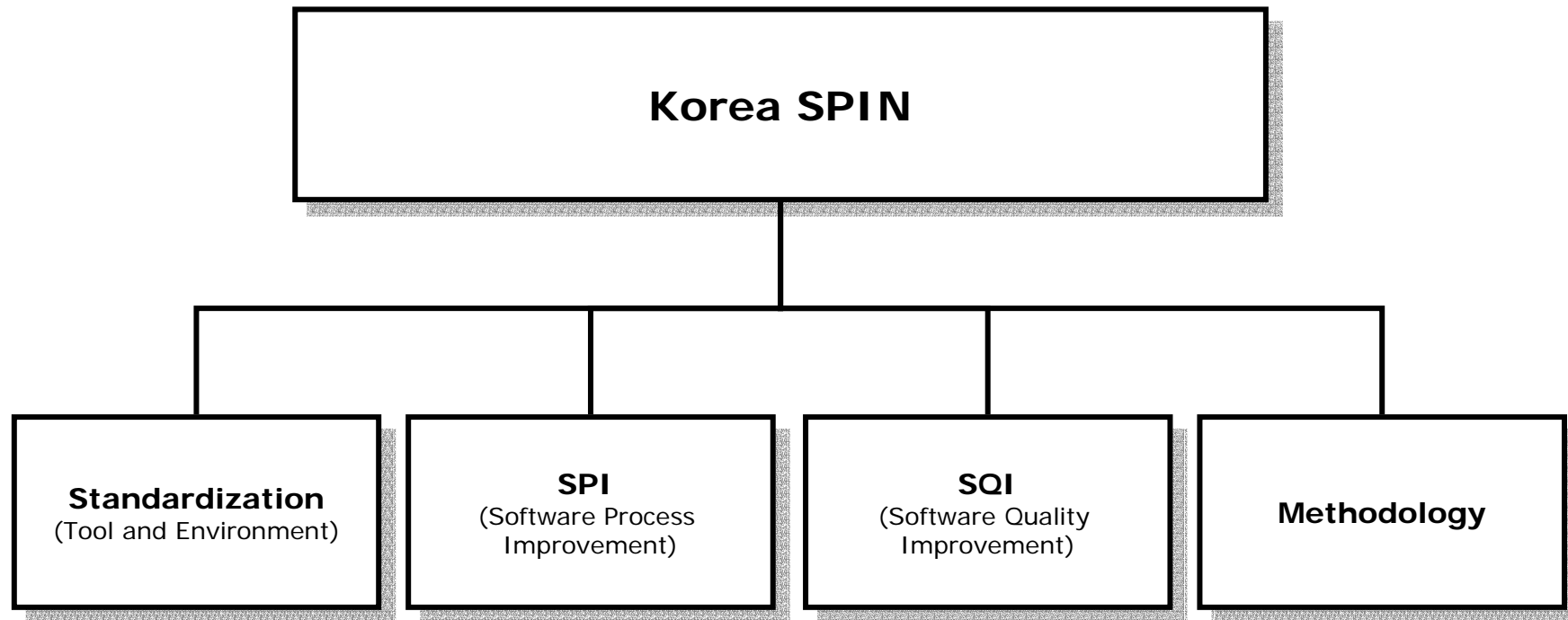
- ❑ A Korean organization of software professionals who are interested in software process improvement in the field of software engineering and IT management
- ❑ More than 300 Members
- ❑ Sponsored by KSI
- ❑ Managed by Software Integration Technology Research Institute (SITRI)

SITRI

- ❑ Established in September 2000
- ❑ Non-profit organization under the auspices of the Ministry of Information and Communication
- ❑ Research in quality control in SI technology and management, educating managers in the SI industry
- ❑ Disseminate CMM (Capability Maturity Model) in the Korean business community
- ❑ Managing Korea SPIN and CMM for CEO

Korea SPIN (2/2)

- 4 Interest Groups: Standardization, SPI, SQI and Methodology.



- ❑ 2001
 - Reinforcement of International Competitiveness of IT Industry Throughout Software Process Improvement
 - Sept 20 ~ Sept 21, 2001

- ❑ 2002
 - Improvement of Software Quality Competitiveness Based on CMM
 - June 20 ~ June 21, 2002

- ❑ 2003
 - Quantitative Analysis of SPI Activities
 - June 19 ~ June 20, 2003

CMM for CEO

- ❑ 21 members
 - CEO, CIO and CTO (SI, Electronics, Bank, Software Manufacture, etc.)

- ❑ Motivation
 - Need better understandings of Software Engineering
 - Need Commitment for Software Process Improvement
 - Need CMM adoption satisfying various business goals

Future Activities

- ❑ Cooperation with Japan and China
- ❑ Transition to CMMI
- ❑ Development of Korean SPI Methodology

More Questions ?



**THANK
YOU!**

**Hyuk-Soo Han, Director
KSI (Korea Software Institute)
KIPA (Korea Industry Promotion Agency)**

**Tel: 82-2-2141-5700
E-mail : hshan@software.or.kr**